

William R. Bennett Bridge Public Art Project

Report to Council
November 10, 2008

Project Objectives

- Strong visual presence
- Visual appeal day / night / 4 seasons
- Express a sense of place and identity
- Compliment the bridge design
- No distraction or hazard
- Environmentally sustainable design

Project Themes

- Gateway to Kelowna
- Connecting communities and cultures
- Relationship between community and natural environment (lake, shoreline)
- History of the lake crossing

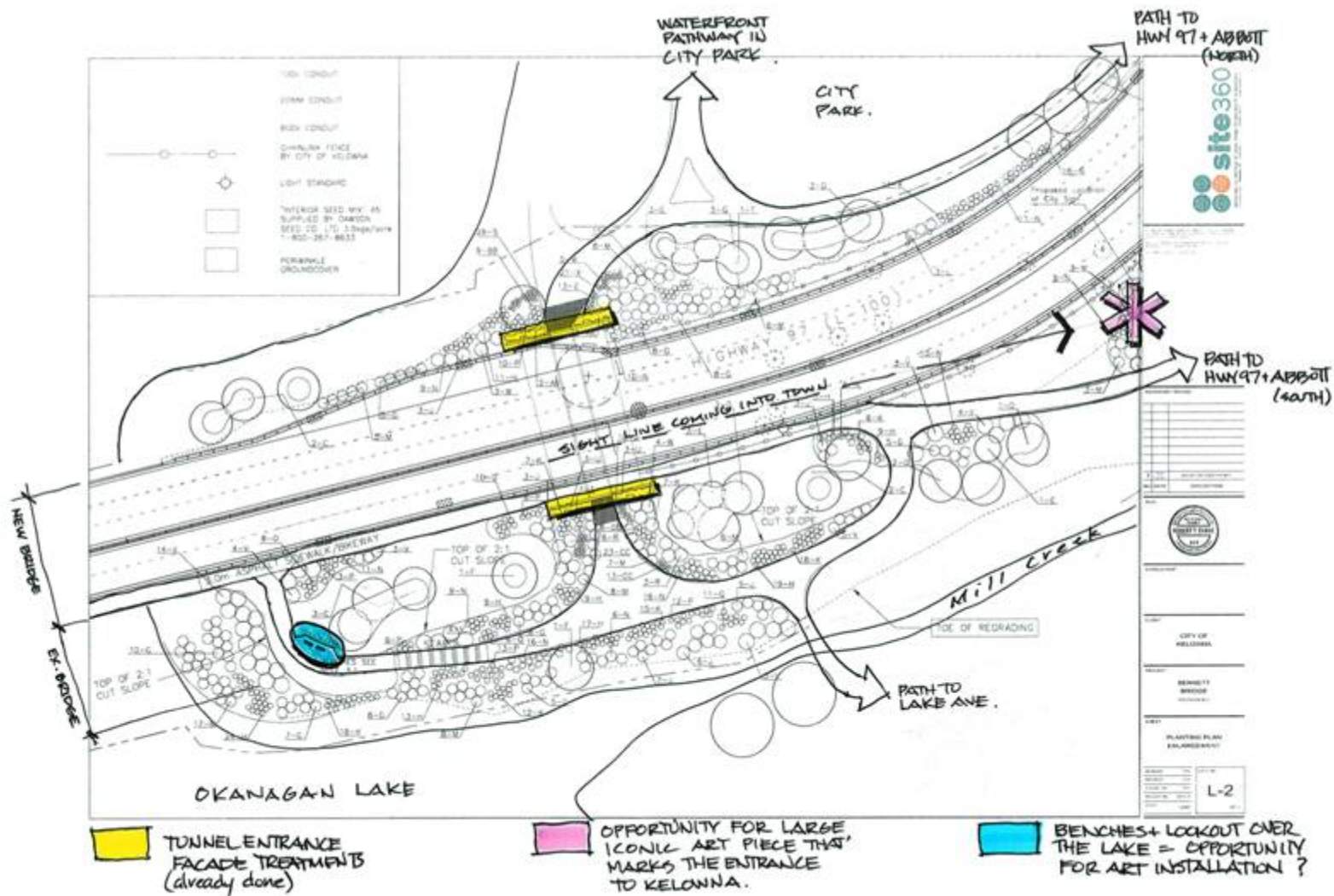
Art installation sites

Location 1

- primary site adjacent to roadway
- suitable for large sculptural work

Location 2

- secondary site adjacent to tunnel pathway and viewpoint
- suitable for interpretive elements / panels





RFP & Selection Process

- \$200,000 budget
 - \$40,000 from MOT + \$160,000 from accumulated Public Art Reserve
- 170 inquiries
- 19 proposals
- 3 artists shortlisted
- Review by Public Art Committee, MOT, Parks Division and Emil Anderson Construction

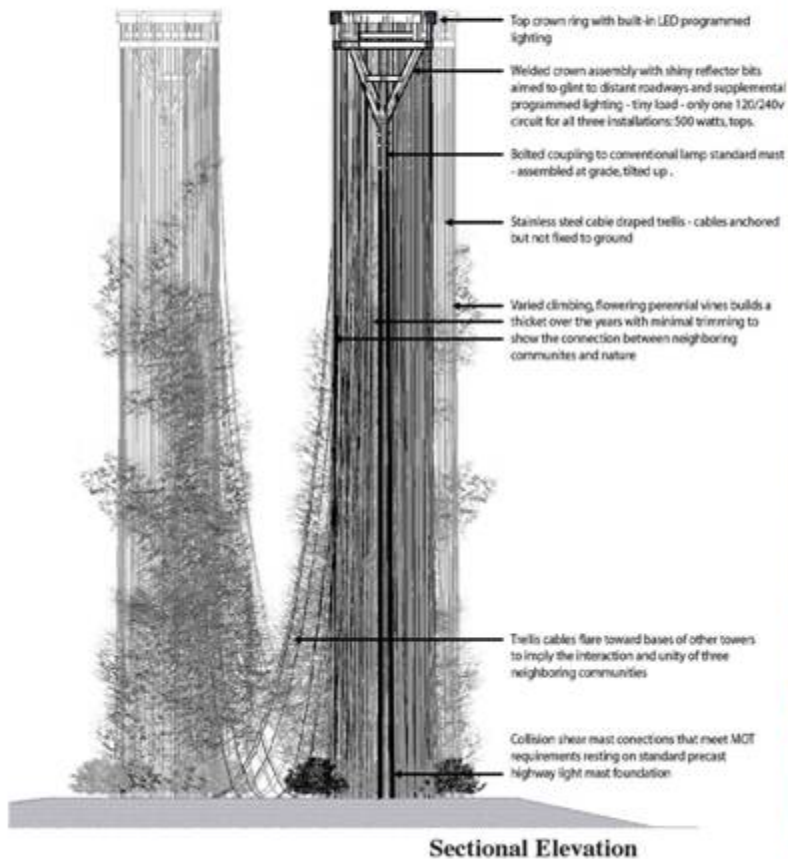
Shortlisted Proposal 1

Dwight Atkinson, Vancouver

‘Three Communities Sharing
Nature’

Location 1

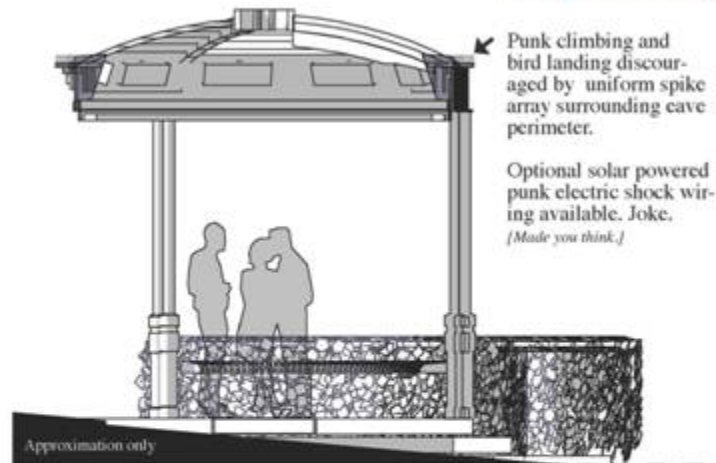
The Tower Triad: three towers metaphorically express the relationship of three related communities and nature through a “growing together” of living vines producing an annual celebratory burst of blooming colour.



Location 2

The Temple:

A quiet, spiritual place to consider Kelowna's past and future at leisure.
Sit, read, think and gaze along the lake.



The Temple Roof:

Sketches adjacent left only approximate the complex inter-leaving of structure, text and silhouettes that will tell the story of nautical and civil engineering developed in Kelowna used on Okanagan Lake.

Each of the three roof segments will provide silhouette artwork with text and details related to each community neighbour in meticulous waterjet imagery.

Finish: Galvanized metal

The Temple Base:

This open structure minimizes spraypaint opportunities and other insults, addressing CPTED guidelines for clear sight in all directions.

Suspended seating: vertical bench elements do not provide a spray or scratch opportunity.

Finish: Galvanized metal.

History medallion: will summarize regional nautical and engineering matters. Cast aluminum.

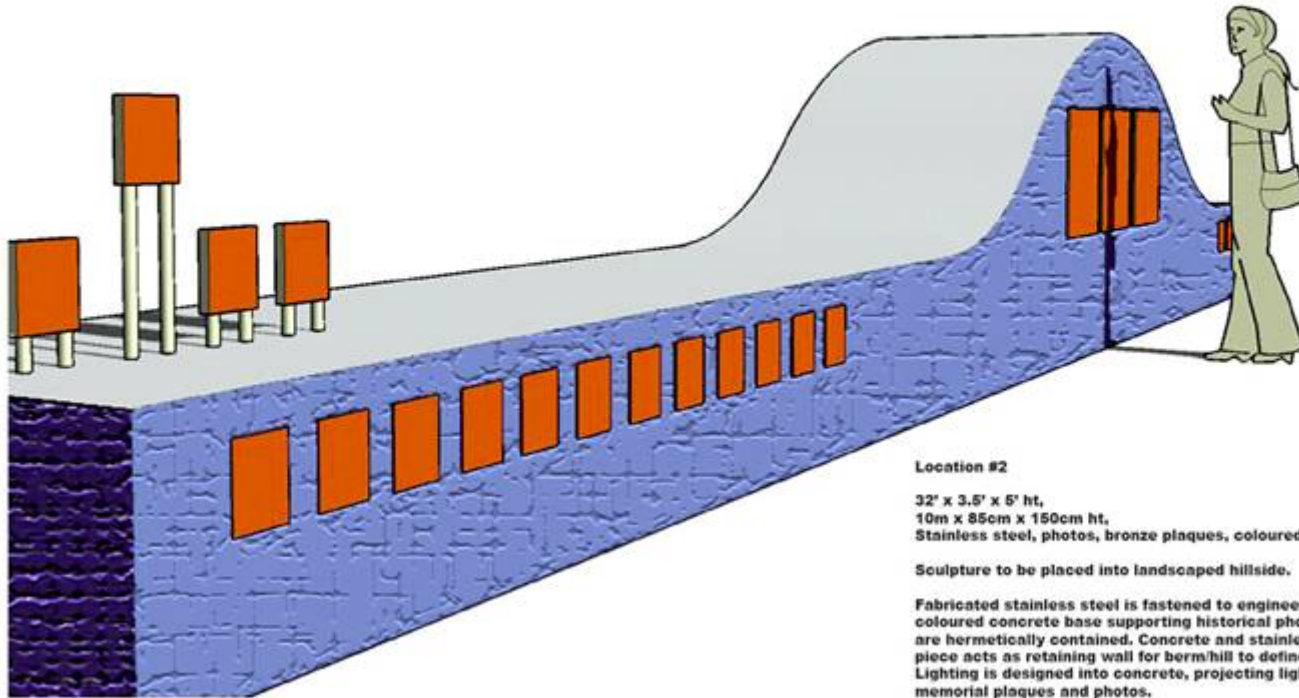
Shortlisted Proposal 2

Byron Johnston, Kelowna

Location 1



Location 2



Location #2

32' x 3.5' x 5' ht,
10m x 85cm x 150cm ht,
Stainless steel, photos, bronze plaques, coloured concrete

Sculpture to be placed into landscaped hillside.

Fabricated stainless steel is fastened to engineered coloured concrete base supporting historical photos that are hermetically contained. Concrete and stainless steel piece acts as retaining wall for berm/hill to define pathway. Lighting is designed into concrete, projecting light onto memorial plaques and photos.

Shortlisted Proposal 3

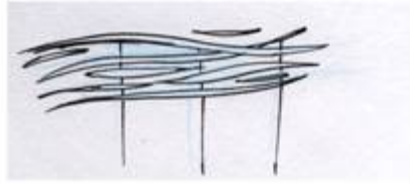
ie Creative Artworks

(Cheryl Hamilton & Michael Vandermeer)

Vancouver

‘Spirit’

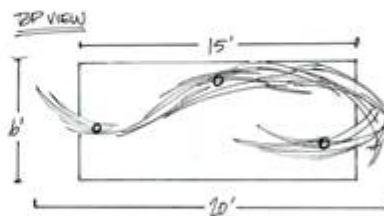
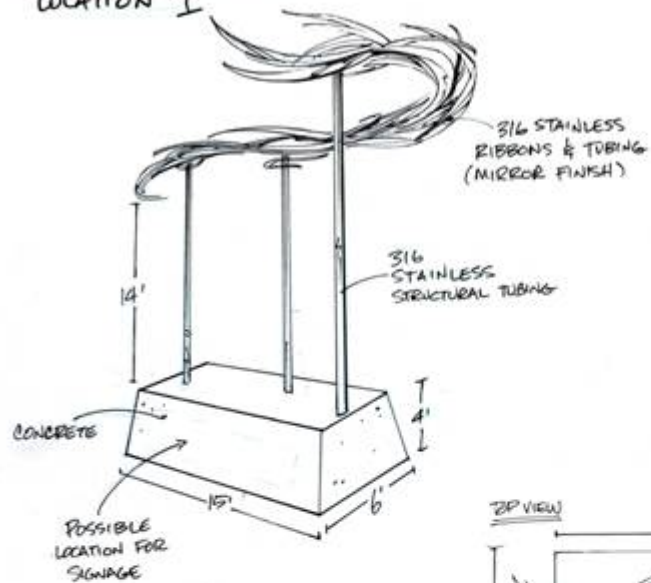
Artist's Inspiration Images and Sketches for "Spirit"



Location 1



SCULPTURE FOR LOCATION 1



EXAMPLE OF PLINTH FOR BRONZE PLAQUE OR INTERPRETATIVE PANEL



Location 1 revised

City of Kelowna WRB Bennett Bridge Competition

August, 2008

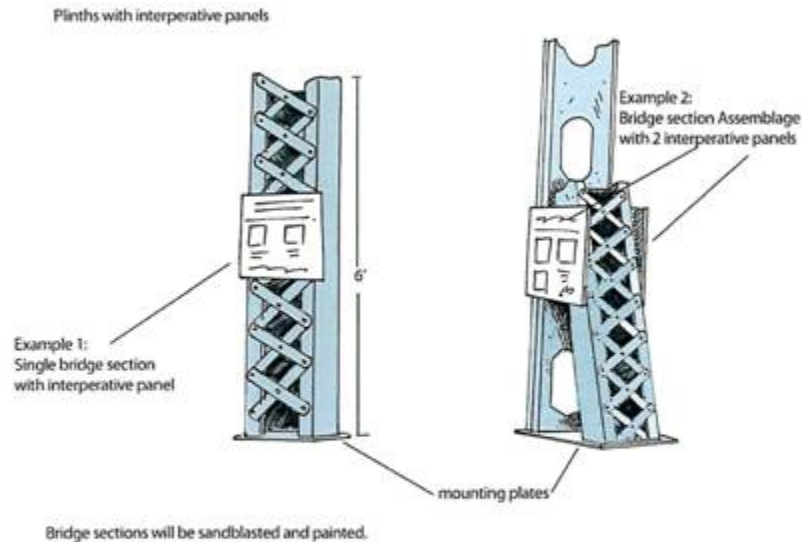


"Spirit"
Concept Sketch
August 2008

Location 2 revised

City of Kelowna WRB Bennett Bridge Competition

August, 2008



There will be 2 "Example 1" plinths Holding 2 metal panels each and 1 "Example 2" plinth holding 3 metal panels. (7 total)
Each Metal panel can hold 2 of the Historic Info panels. (Each Historic Info Panel sized at 9"H x 12"W") (18"H x 12"W total)

ie creative 1399 Railspur Alley, Vancouver, B.C. V6H 4G9
604 254 4374 www.iecreative.ca studio@iecreative.ca

i.e. creative Artworks portfolio

